

TARGET GROUPS

| Year | Number of Students |
|-------|--------------------|
| 2016 | 826 |
| 2017 | 253 |
| 2018 | 1080 |
| Total | 2159 |

| Year | Number of Teachers |
|-------|--------------------|
| 2016 | 121 |
| 2017 | 26 |
| 2018 | 216 |
| Total | 363 |



CONTACT INFORMATION

English Language Teaching Centre
Ministry of Education Malaysia
Kompleks Pendidikan Nilai
71760 Bandar Enstek
Negeri Sembilan

Telephone : +606-7979000/111
Fax : +606-7979113 /114
Email : admin@eltc.edu.my



**ENGLISH LANGUAGE TEACHING CENTRE
MINISTRY OF EDUCATION MALAYSIA**

ENGLISH LANGUAGE OUTREACH PROGRAMME

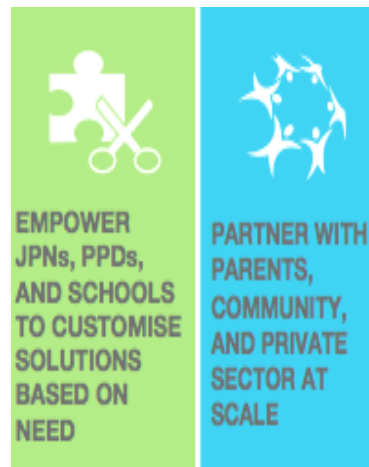
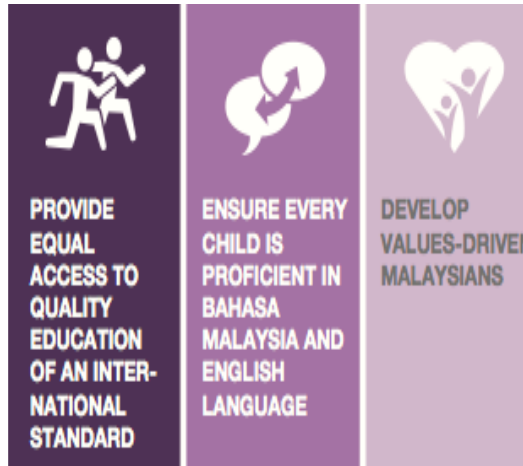


www.eltc.edu.my

INTRODUCTION

The English Language Outreach Programme aims to support pre-schoolers as well as primary and secondary students in Bands 4 – 6 schools by exposing and engaging them to English language activities in order to enhance their learning and use of the language. In addition, this programme also aims to expose accompanying teachers to the various pedagogical knowledge while carrying out activities with the lecturers from ELTC. The participating schools are provided with a toolkit (module and resources) that the teachers will follow up and follow through with their colleagues at their respective schools. This programme emphasises on thematic play-based activities to capture students' high interest and engagement in the activities planned by ELTC. This programme also adhered to strategic clustering approach where students and teachers from different types of schools (SK, SKA, SJK, SMK, SAM, SABK) are strategically grouped together to facilitate professional discourse and collaborative problem solving in the teaching and learning of the English language.

PPPM 2013-2025 SHIFTS RELATED TO OUTREACH



LEARNING OUTCOMES

The learning outcomes are to:

1. increase students' confidence in using the English Language.
2. increase students' aural oral skills.
3. increase the use of various pedagogical knowledge amongst teachers.

CONTACT INFORMATION

English Language Teaching Centre
Ministry of Education Malaysia
Kompleks Pendidikan Nilai
71760 Bandar Enstek
Negeri Sembilan

Telephone : +606-7979000/111

Fax : +606-7979113 /114

Email : admin@eltc.edu.my